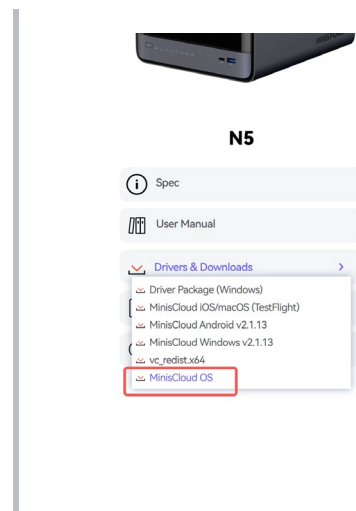


MinisCloud OS Installation step

(Only Applicable to N5/N5 Pro)

1. Preparatory Work

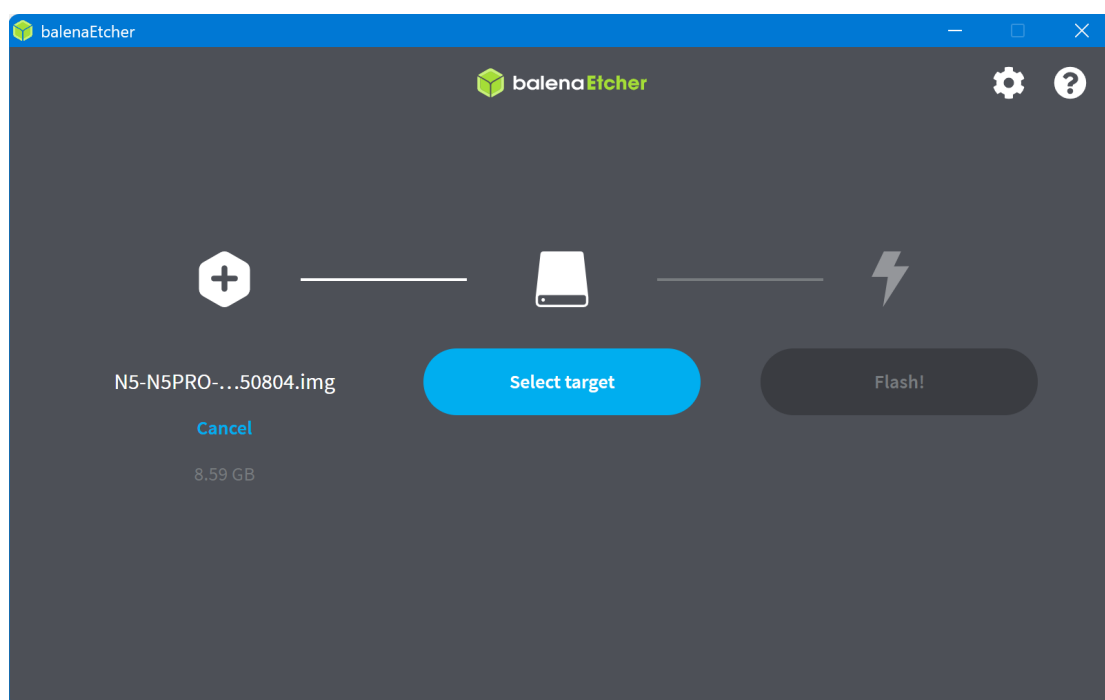
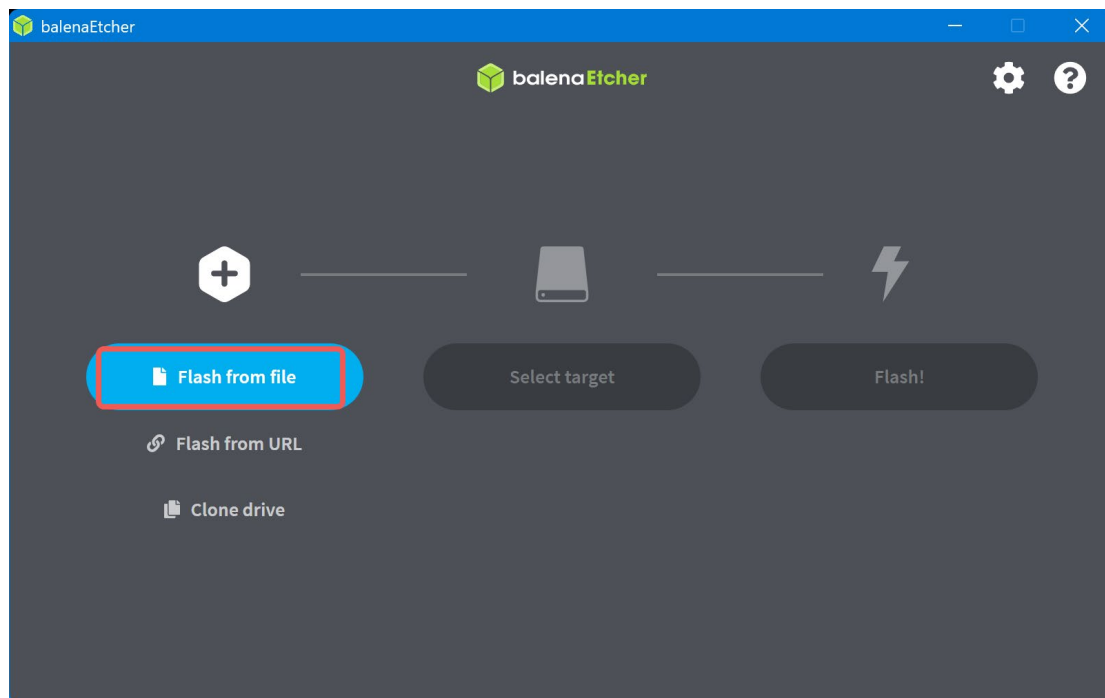
1. System Disk: USB Flash Drive or Solid State Drive (recommended capacity of 32GB or more)
2. Burning Software: [BalenaEtcher](https://www.balena.io/etcher) , Download Link <https://www.balena.io/etcher>
3. System mirroring:[MinisCloud OS](https://www.minisforum.com/pages/product-info), system mirroring download link:<https://www.minisforum.com/pages/product-info>



4. A properly functioning computer (used for creating system disks)
5. One N5/N5 Pro

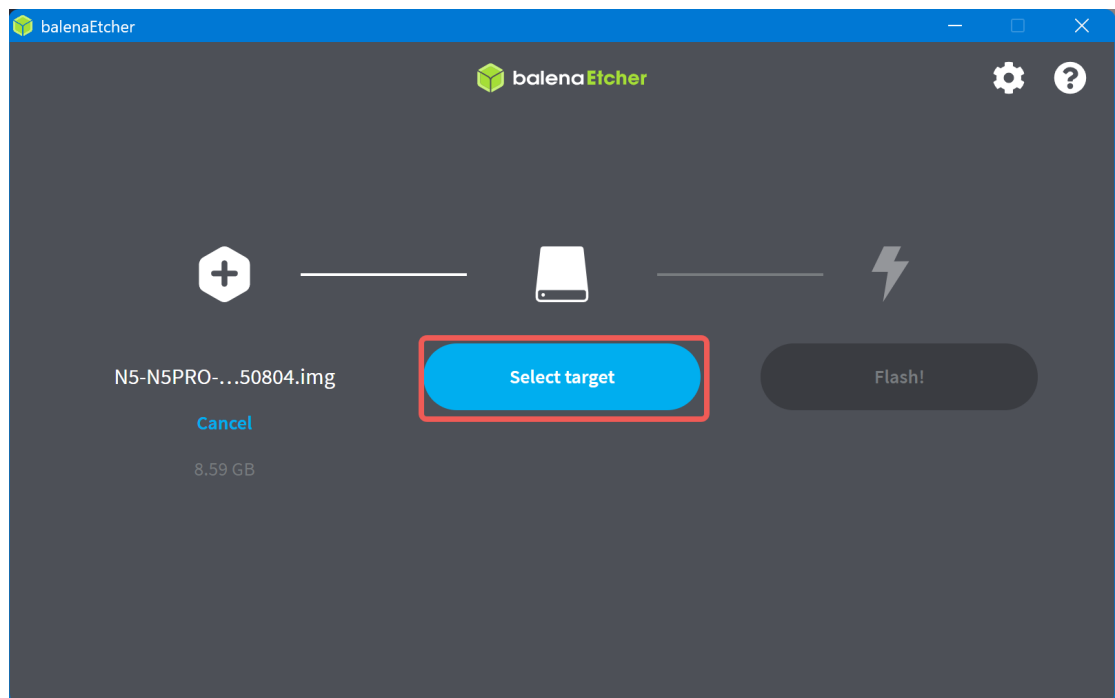
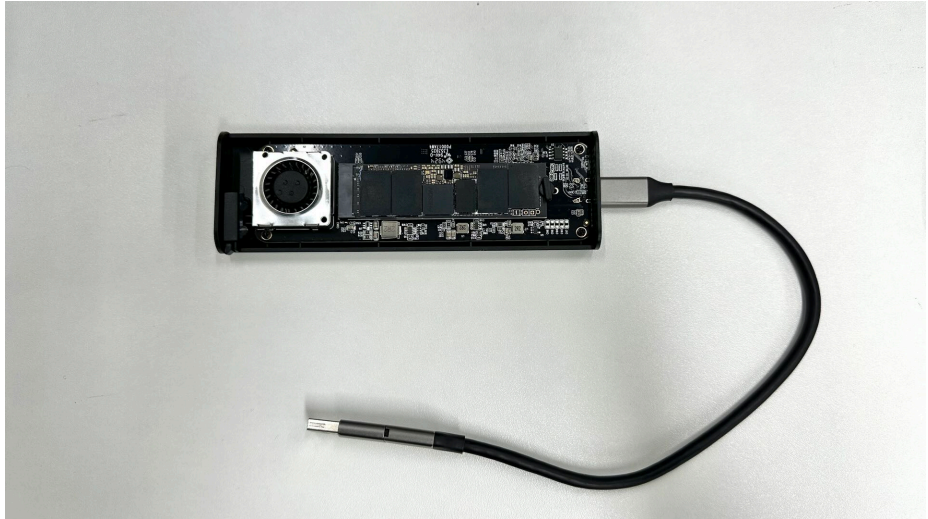
2. Open [BalenaEtcher](#)

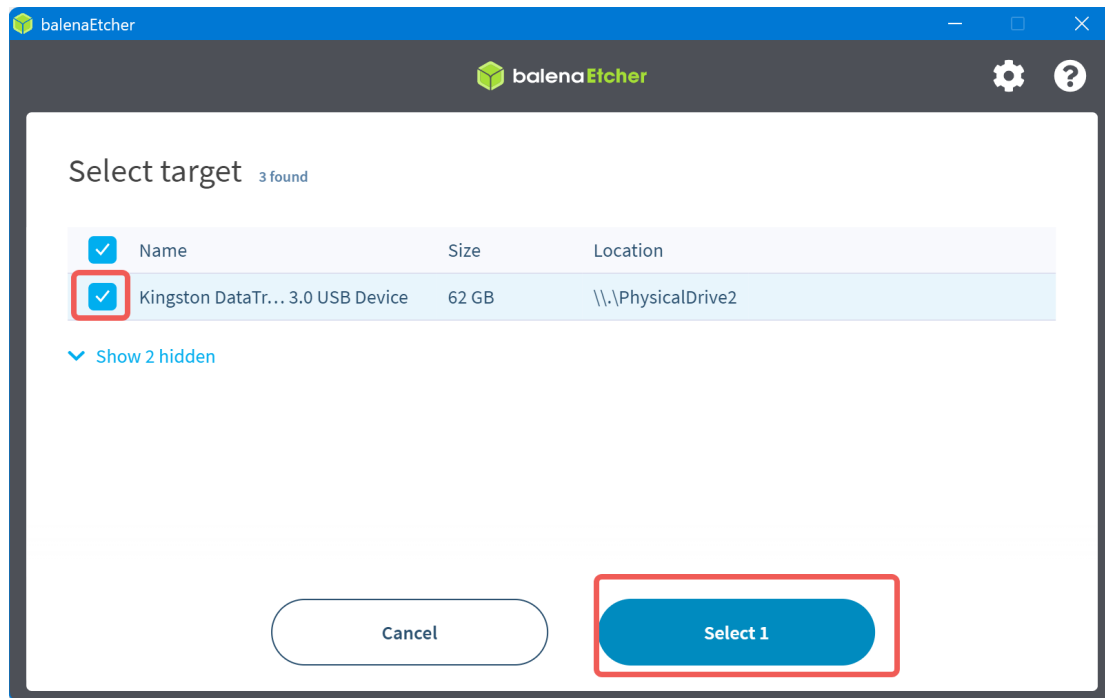
Select the decompressed "N5-N5PRO-OS-xxx.img" mirroring file



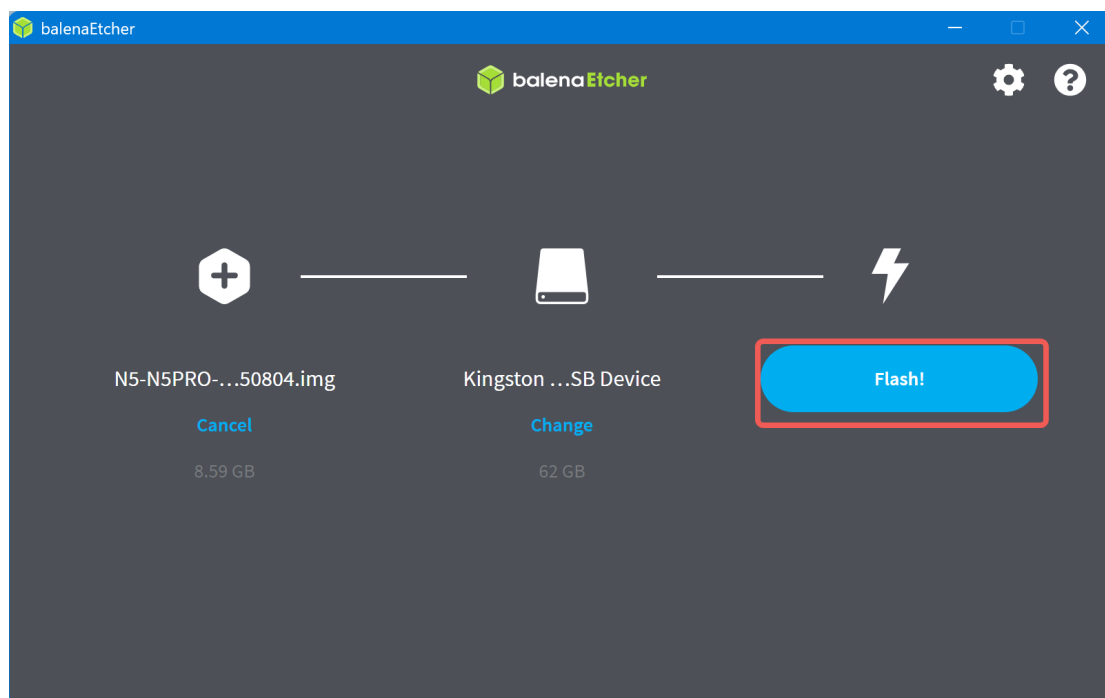
3. Select the target system disk

1. If you choose a USB flash drive as the system drive, you can directly connect it to the burning computer
2. If you choose a solid-state drive, you can use an external hard drive enclosure or directly insert it into the M.2 slot of the burning computer



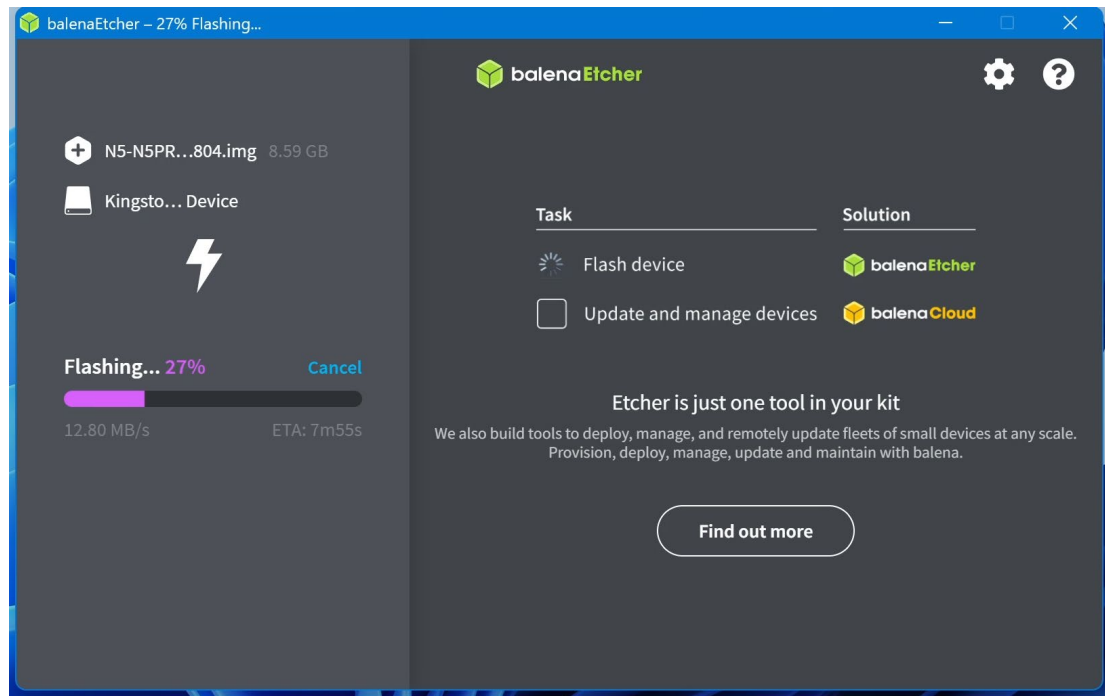


4. Click "Flash" to start writing



5. Wait for the write to complete

Completion time depends on the hard drive speed

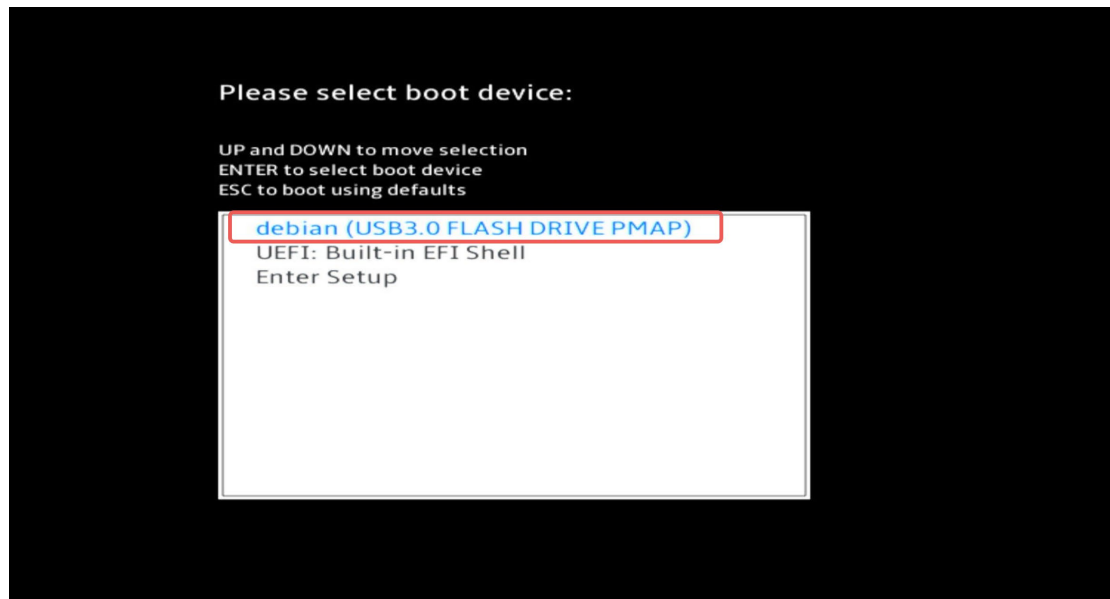


6. After writing is completed, install the system disk into the NAS host, then power on the system

If it is an M.2 SSD, please connect it to the SSD slot; if it is a USB flash drive, connect it to any USB port of the NAS

7. Set the system drive as the first boot item

After turning on the computer, repeatedly press the "Delete" key on the keyboard to enter the BIOS, and select "Boot".



8. After powering on, wait a moment until the system automatically activates and then shuts down

When the device is turned on for the first time, it needs to connect to the Internet to activate the system. After successful activation, it will automatically shut down, which is a normal phenomenon.



9. Press the power button again, and the IP Address will appear to start successfully.

Then, after manually turning it on again, it displays the IP Address.

